

MDH2 Antibody (Center)
Purified Rabbit Polyclonal Antibody (Pab)
Catalog # AP2909c**Specification**

MDH2 Antibody (Center) - Product Information

| | |
|-------------------|---|
| Application | WB, FC, IHC-P,E |
| Primary Accession | P40926 |
| Other Accession | P04636 , P00346 , P08249 , Q4R568 , O02640 , Q32LG3 , P22133 |
| Reactivity | Human, Mouse |
| Predicted | Yeast, Bovine, C.Elegans, Monkey, Pig, Rat |
| Host | Rabbit |
| Clonality | Polyclonal |
| Isotype | Rabbit IgG |
| Antigen Region | 86-115 |

MDH2 Antibody (Center) - Additional Information**Gene ID** 4191**Other Names**

Malate dehydrogenase, mitochondrial, MDH2

Target/Specificity

This MDH2 antibody is generated from rabbits immunized with a KLH conjugated synthetic peptide between 86-115 amino acids from the Central region of human MDH2.

Dilution

WB~~1:1000
FC~~1:10~50
IHC-P~~1:10~50
E~~Use at an assay dependent concentration.

Format

Purified polyclonal antibody supplied in PBS with 0.09% (W/V) sodium azide. This antibody is prepared by Saturated Ammonium Sulfate (SAS) precipitation followed by dialysis against PBS.

Storage

Maintain refrigerated at 2-8°C for up to 2 weeks. For long term storage store at -20°C in small aliquots to prevent freeze-thaw cycles.

Precautions

MDH2 Antibody (Center) is for research use only and not for use in diagnostic or therapeutic procedures.

MDH2 Antibody (Center) - Protein Information

Name MDH2

Cellular Location

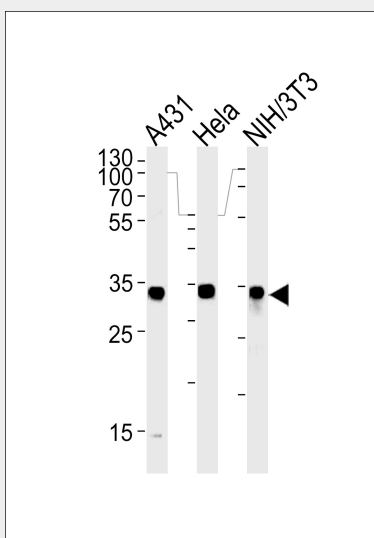
Mitochondrion matrix {ECO:0000250|UniProtKB:P04636}

MDH2 Antibody (Center) - Protocols

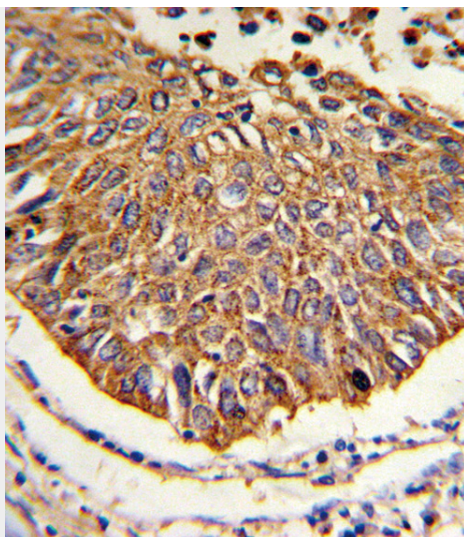
Provided below are standard protocols that you may find useful for product applications.

- [Western Blot](#)
- [Blocking Peptides](#)
- [Dot Blot](#)
- [Immunohistochemistry](#)
- [Immunofluorescence](#)
- [Immunoprecipitation](#)
- [Flow Cytometry](#)
- [Cell Culture](#)

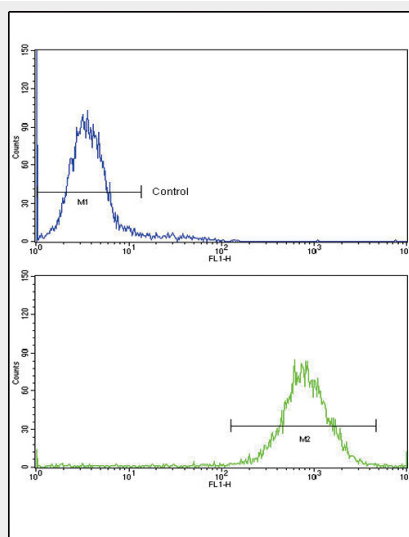
MDH2 Antibody (Center) - Images



MDH2 Antibody (Center) (Cat. #AP2909c) western blot analysis in A431, HeLa and mouse NIH/3T3 cell line lysates (35ug/lane). This demonstrates the MDH2 antibody detected the MDH2 protein (arrow).



Formalin-fixed and paraffin-embedded human lung carcinoma reacted with MDH2 Antibody (Center), which was peroxidase-conjugated to the secondary antibody, followed by DAB staining. This data demonstrates the use of this antibody for immunohistochemistry; clinical relevance has not been evaluated.



Flow cytometric analysis of K562 cells using MDH2 Antibody (Center)(bottom histogram) compared to a negative control cell (top histogram) FITC-conjugated goat-anti-rabbit secondary antibodies were used for the analysis.

MDH2 Antibody (Center) - Background

MDH2 is localized to the mitochondria and may play pivotal roles in the malate-aspartate shuttle that operates in the metabolic coordination between cytosol and mitochondria.

MDH2 Antibody (Center) - References

Rzem, R., et al., J. Inherit. Metab. Dis. 30 (5), 681-689 (2007)

MDH2 Antibody (Center) - Citations

- [SEIPIN Isoforms Interact with the Membrane-Tethering Protein VAP27-1 for Lipid Droplet Formation](#)